



PURE ESSENTIAL OIL
WORKS

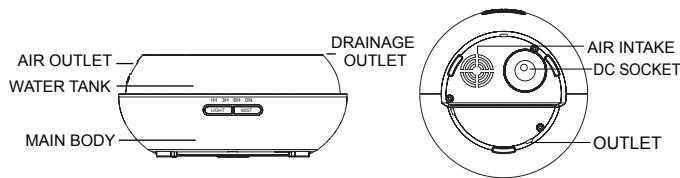
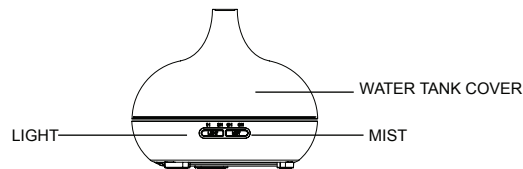
Golden Goddess Ultrasonic Aroma Diffuser



IMPORTANT INSTRUCTIONS — RETAIN FOR FUTURE USE

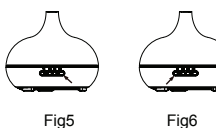
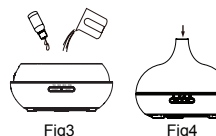
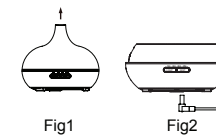
Congratulations on your purchase of the **Pure Essential Oil Works Golden Goddess Ultrasonic Aroma Diffuser**. Please read the instructions and safety tips before use. Your diffuser comes with a one-year limited warranty. If for any reason you need service, please call 800-520-6000.

This aroma diffuser uses ultrasonic technology to instantly vaporize water and essential oil to produce a cool, dry, fragrant mist.



How to Operate

1. Keep product upright, remove the upper lid and water cap in a vertical direction. See Fig 1.
2. Connect the AC adaptor to the base of DC jack of the main body via cable guide. See Fig 2.
3. Use the measuring cup to carefully fill tank with water. See Fig 3.
 - Do not exceed the max line on the water tank.
 - Use room temperature water. Hot water will cause mist to fly out.
 - Never fill tank with water during operation.
4. Add essential oil into the water (Advise 1-2 drops oil per 100 ml water). Use more or less oil depending on the level of intensity you prefer.
5. Install the cover of the main body with the original channel. In a vertical direction, rotate the cover to adjust the desired position mouth spray. Note: You must use the upper cover when using the product. See Fig 4.
6. Attach the AC adapter plug to power outlet.
7. Press "MIST" button to choose the time needed (1H, 3H, 6H or ON continuous spray time). Mist level is adjustable by hard-pressing "MIST" until the diffuser beeps (One beep for high, two beeps for low). To turn off, press "MIST" button five times (from 1H, 3H, 6H, ON to OFF). See Fig 5.
8. Press "LIGHT" button to turn on the LED light (seven light color options at varying brightness are available). See Fig 6.



9. When the power is switched on, the initial state of unit is turned off.

10. If the water level inside the unit runs too low, the unit will automatically stop operating.

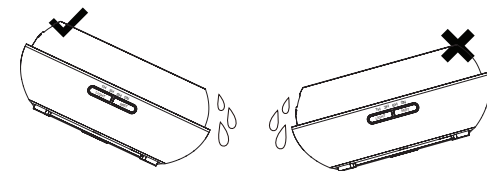
11. If you do not use unit for a long time, drain out the water from the tank.

Maintenance

For best operation and safety, please follow these steps if diffuser has been used for 5-6 times or 2-3 days:

1. Disconnect the adapter from the power socket. Remove cover.
2. Drain the remaining water from the drain outlet side. Do not drain the water from the air outlet side.
3. Remove the adapter from the main body.
4. Add a small amount of mild kitchen detergent and warm water. Use swab to wipe it gently.
5. Drain solution from the drain outlet side of the tank.
6. Lightly use a cleaning cloth to dry it.

Never use other acids, enzymes or detergents, as this may risk poisonous gas to be created or cause malfunction.



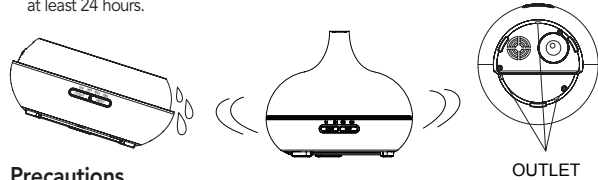
Attention

- Product use time: about 7 hours.
- The amount and intensity of the mist produced will vary, but this is not unusual and should not be considered as a fault. Factors that affect this include water type, humidity, temperature and air currents.
- Automatically powers off when water runs out.
- Only 100% natural essential oil can be used with this product. Use 1-2 drops per 100ml water at a time. Too much will clog the system and cause malfunction. Please clean unit per the maintenance instructions, before changing to use a new type of essential oil.

Accidental Leakage

In the event of the unit being knocked over or tipped during use, please follow the steps below to avoid malfunction:

1. Unplug the unit and remove cover.
2. Pour out any remaining water from tank.
3. Shake the unit gently to drain any water inside the mechanism, and then allow drying for at least 24 hours.



Precautions

In order to avoid damage to the diffuser:

- Do not fill over 300ml "MAX" at any time.
- Do not switch on power when the tank is empty.
- Do not touch the ultrasonic vibration plate.
- Clean regularly as per maintenance instructions to avoid malfunction.

- Always unplug from power supply before maintenance.
- For hygiene reasons, after use, pour away remaining water from drain outlet side of tank and wipe with a clean dry cloth.
- Only use measuring cup provided to add water to the tank. Never fill directly from the tap.
- Do not let mist blow directly onto furniture, clothing, walls, etc.
- Keep away from direct sunlight and air conditioners or fans.
- Always keep on stable, flat surface. Do not place on carpet, duvet or unstable area.
- Keep away from electronic equipment, such as TV and audio equipment.
- Do not tip the product as this may cause water to enter the mechanism and cause malfunction.
- Do not continue to use product without interruption after the product powers off automatically. Wait 60 minutes before restarting to avoid damage to ultrasonic plate.
- Use tap water only. Do not use mineral water, sparkling water, etc.
- Never move product in use.
- Do not touch any part of the product with wet hands.
- Keep out of the reach of children and pets.
- Keep cord clear of pathways, and do not pull forcefully at any point.
- If smoke or burning smell is detected, unplug immediately.

Specifications

Size	6.6" Round X 5.7"H
Weight	About 0.79 lbs. (adapter not included)
Supply power: input	AC100-240V 50/60Hz
output	DC 24V 650mA
Power	Approx. 11W
Time mode	1H/3H/6H/ON
Mist production method	Ultrasonic vibration at approx. 2.4MHz
Water capacity	10 oz./300ml
LED Light	5 pieces
Materials	PP/ABS
Accessories	AC Adapter, measuring cup and user manual

Troubleshooting

Please refer to the table below in the even the product is operating abnormally.

Problem	Answer
Will not switch on or switch off	<ul style="list-style-type: none">• Is there enough water in the tank?<ul style="list-style-type: none">- Add water to the tank.3. Check if air outlet is blocked with too much water.• Is the power cord connected properly?<ul style="list-style-type: none">- Disconnect, check cables and reconnect carefully.
No mist or abnormal mist	<ul style="list-style-type: none">• Not enough water or too much water?<ul style="list-style-type: none">- Please add suitable amount of water in the tank. Water must never be filled over 300ml (MAX) line.• Dirt on ultrasonic plate?<ul style="list-style-type: none">- Refer to maintenance instructions. Remove and reinstall correctly so vapors can be released freely* Cover and inner cover are not installed properly? Dirt on the air suction port on the underside of the base?<ul style="list-style-type: none">- If too much dust in the air suction port, the mist will be restricted to come out. Clean it.
Water leaks from product	<ul style="list-style-type: none">• Cover and inner cover are not installed properly?<ul style="list-style-type: none">- Remove and reinstall correctly so vapors can be released freely.• Low temperature or high humidity?<ul style="list-style-type: none">- Under these conditions, the mist may condense quickly into water droplets.



PURE ESSENTIAL OIL
WORKS

Item #308179

pureessentialoilworks.com • 800.520.6000

tng worldwide • New Hudson, MI 48165

©2017 TNG • Made in China